

# Climate Fraud & the Decline of America

*The more that research shows mankind is not causing most global warming, the more shrill the warming alarmists become. Worse, our public schools are teaching our kids that man-caused warming is an absolute fact.*

*By Michael S. Coffman, Ph.D.*

**A**sk any school-aged child if man is causing global warming and he or she will tell you with absolute certainty that “Yes we are, and we must stop it!” After all, public-school students have been barraged for more than two decades with false information that man-caused CO<sub>2</sub> is a dangerous pollutant that is causing earth-destroying global warming.

Rare is the teacher who has done the simple research to realize the entire CO<sub>2</sub>/global-warming mantra is one of the greatest hoaxes perpetrated on mankind. To the contrary, CO<sub>2</sub> is not a pollutant. It is the raw ingredient for plant photosynthesis, and is an essential gas for life on earth. As hundreds of research studies have shown, the more CO<sub>2</sub> in the atmosphere, the better plants and crops grow, and their drought resistance improves. Most importantly, there are no adverse effects on people, even at triple today’s concentrations of CO<sub>2</sub>.

The following simplified article uses recent research to graphically explain how the fraud was perpetrated. The impact of this fraud on our economy and our schoolchildren is huge. Our kids are literally being brainwashed and our economy destroyed by unneeded and extremely destructive EPA regulations. So, at the risk of eyes glazing over, this fraud needs to be exposed.

## What Does Research Show?

Past articles in *RANGE* have discussed the alleged role of CO<sub>2</sub> in man-caused global warming. The warming theory is not based on CO<sub>2</sub> and other greenhouse gases that directly cause the warming. Instead, CO<sub>2</sub> causes cumulonimbus cloud formation (thunderstorms) in the tropics, which puts more moisture and high-elevation cirrus clouds in the tropical upper troposphere and stratosphere. This moisture is the greenhouse gas that causes the warming—moisture that was created by a little extra CO<sub>2</sub> caused by man’s activity. There is no disagreement on this in the scientific community. There is still a problem with this, however, because there is absolutely no evidence of this happening over the past 50 years. (See “The Economy-Wrecking EPA,” *RANGE*, Spring 2012, at [www.rangemagazine.com](http://www.rangemagazine.com).)

So what about the huge body of evidence that historically shows that ice caps and glaciers are melting, continents are warming, droughts and forest fires are increasing, summers are hotter (2012 is an example), and, overall, the earth’s temperature has been rising? Most honest scientists would say: “So what. This evidence is at best circumstantial and says nothing about what is causing the warming.”

Nonetheless, it is this type of evidence

that drives the man-caused global-warming theory. Is it correct? Not so much! It turns out that there are huge errors introduced in the ground temperature data. For instance, the historic standard used for thermometer site location is around 100 feet from the nearest obstacle that may affect temperature and wind flow, and the site must be surrounded by grass or natural soil. However, good site location is very rare today. As the photos in Figure 1 show, most stations are near buildings, asphalt parking lots or driveways, or other things that tend to give off or trap heat and alter wind flow. A massive study conducted by former meteorologist Anthony Watts determined that 90 percent of the 1,400 temperature measuring stations in the United States are positioned (i.e. sited) in a way that increases temperature recordings between 1 and 5°C (1.8 to 9°F)! Sixty-four percent of the stations had a warming bias of at least 2°C (3.6°F). (See [SurfaceStations.org](http://SurfaceStations.org).)

That’s not all. Skeptics of man-caused warming have long held that much of the so-called warming is a result of what is called the “urban heat island effect.” The majority of cities (and their hot asphalt) have expanded over the past 60 to 70 years around once rural airports where official temperatures are taken. This artificial heating forms a small

dome (island) of hot air over the city and the temperature sensor. Yet, the U.N. Intergovernmental Panel on Climate Change (IPCC) cites research that shows there is no urban heat island effect. That conclusion defied logic for skeptics.

Satellite temperature measurements since 1979 seemed to confirm the urban heat island effect (Figure 2), but could not prove it. The satellite temperatures, which measure a huge pool of air in the troposphere rather than just a specific spot on the ground, showed the earth’s temperatures were about 0.35°C (0.63°F) cooler and experienced



**Figure 1. LEFT:** Official measuring station at the University of Arizona, Tucson. **RIGHT:** Official measuring station at John Martin Reservoir in Colorado. Very few temperature measuring stations in the U.S. are properly sited. When positioned near buildings, trees, asphalt, air conditioners, incinerators, jets (warm-up ramps at airports), wastewater treatment plants (yes, they give off a lot of heat!), anything that causes or traps heat will give a false temperature reading that incorrectly is attributed to global warming. Most of these bad sitings have occurred the past 30 years when gradually converting from mercury thermometers to electronic measuring devices. These have given a false impression of warming the last few decades. Source: Joseph D’Aleo and Anthony Watts, “Surface Temperature Records: Policy-Driven Deception?” *Science & Public Policy Institute*, Aug. 27, 2010. [http://scienceandpublicpolicy.org/images/stories/papers/originals/surface\\_temp.pdf](http://scienceandpublicpolicy.org/images/stories/papers/originals/surface_temp.pdf)

about half the warming that surface temperature measurements did—just like what would be expected if the urban surface stations were not affected by the urban heat island effect.

Then the Climategate email scandal erupted in 2009, revealing that alarmist scientists were controlling what peer-reviewed science was published and what was not. These emails also discussed how surface data was being manipulated to show warming. The controversy was quickly whitewashed and swept under the carpet by Great Britain and the United States, but the evidence of data manipulation was there for all to see—if they wanted to see it.

### Urban Heat Island Effect Is Real

As noted previously, most rural stations historically showed the same basic warming signature as urban stations. However, that historical data had been “adjusted” to correct for various historic changes in station location, instrumentation and observing practice. Some of the adjustments were supposed to remove noise and other random perturbations of the temperature record, including the urban heat island effect.

Skeptical scientists wanted to look at the raw temperature data—which was guarded more securely than Fort Knox by the three major global temperature repositories: NOAA and NASA in the United States, and the Cooperative Research Unit (CRU) in Great Britain. It was the CRU that suffered the Climategate email scandal in 2009. If there were an urban heat island effect, rural temperature stations unaffected by urbanization should show little evidence of rapid warming experienced by stations that were affected by urbanization. Skeptical scientists and statisticians used a variety of means to finally get enough of the raw data, and what they found was shocking.

Meteorologists Joseph D'Aleo and Anthony Watts discovered in case after case, nation after nation, that raw temperature data for undisturbed rural stations showed little to no warming, while adjusted data showed significant warming. Figure 3 shows an example from Olney, Ind., which is a very rural city of 9,000 midway between St. Louis, Mo., and Indianapolis, Ind. The Olney airport and its temperature measuring station today are still miles away from the city and the station is sited correctly.

In a follow-up study of preliminary results released in August 2012, Anthony

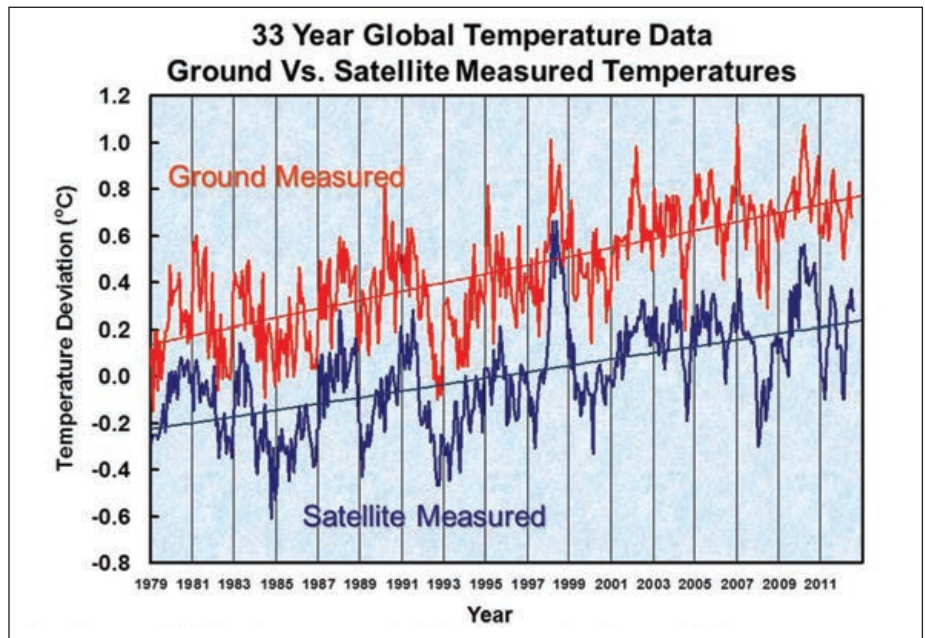


Figure 2. Global-satellite-measured temperatures (accurate to  $\pm 0.01^{\circ}\text{C}$  or  $\pm 0.018^{\circ}\text{F}$ ) have always been lower than ground-measured temperatures, causing much debate within the scientific community. Skeptics have long believed this disparity was caused by the urban heat island effect and other sources of error in the ground data. The warming in the satellite data is only half that of the surface temperature data. Source: Ground data, GISS Surface Temperature Analysis [http://data.giss.nasa.gov/gistemp/tabledata\\_v3/GLB.Ts.txt](http://data.giss.nasa.gov/gistemp/tabledata_v3/GLB.Ts.txt). Satellite data, The National Space & Science Technology Center. <http://vortex.nsstc.uah.edu/data/msu/t2lt/uahncdc.lt>

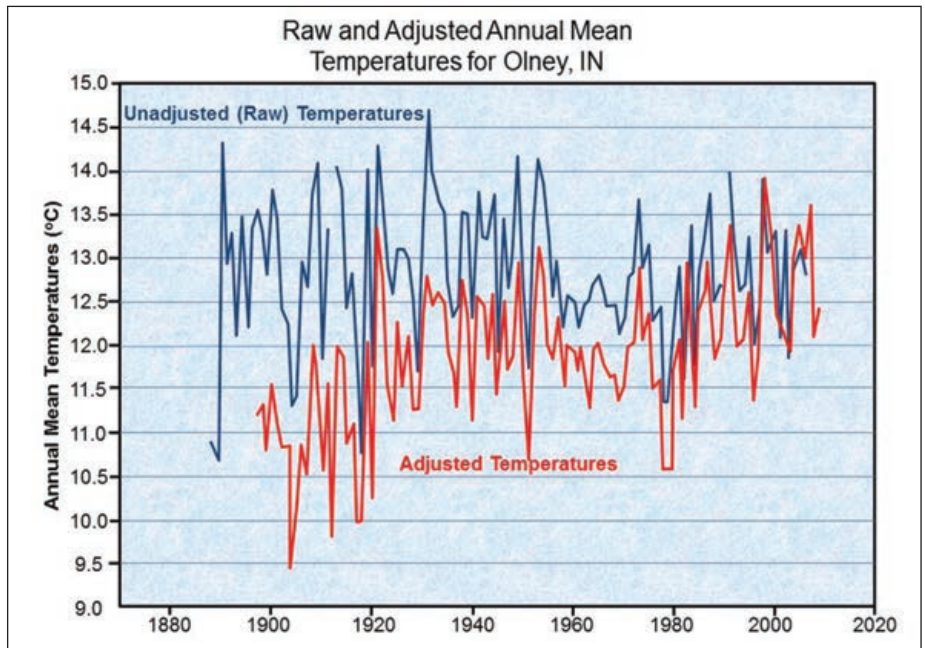


Figure 3. The raw temperature data for Olney, Ind., shows highly variable temperatures since 1885 but no warming trend. The same data adjusted by NOAA show a  $2^{\circ}\text{C}$  warming for the period. Hundreds of rural stations around the world show the same disparity. Source: Joseph D'Aleo and Anthony Watts, “Surface Temperature Records: Policy-Driven Deception?” *Science & Public Policy Institute*, Aug. 27, 2010. [http://scienceandpublicpolicy.org/images/stories/papers/originals/surface\\_temp.pdf](http://scienceandpublicpolicy.org/images/stories/papers/originals/surface_temp.pdf)

Watts, Evan Jones, Stephen McIntyre, John Christy, and other well-known skeptical scientists found that “raw mean temperature trends for well-sited stations are  $0.145^{\circ}\text{C}$  ( $0.26^{\circ}\text{F}$ ) per decade lower than adjusted mean temperature trends for poorly sited

stations, and  $0.145^{\circ}\text{C}$  per decade lower than adjusted mean trend for all stations.” Not only did the “NOAA adjustment fail to adjust poorly sited stations downward to match the well-sited stations, but actually adjusts the well-sited stations upwards to



match the poorly sited stations,” their report stated.

These scientists also found that “well-sited rural stations show a warming nearly three times greater after...adjustments are applied.” When errors from improper siting and the urban heat island effect are combined, there is “a spurious doubling of U.S. mean temperature trends” since 1979. Not surprisingly, this totally explains the difference between surface and satellite temperatures in Figure 2.

It is no small wonder that the IPCC research showed no difference in temperature increases between rural and urban stations. The scientists who developed the adjustment algorithms insist they did not bias the data deliberately, but the hard data discussed above defies credulity. Even so, the fierce debate continues and outrageous

ous years. That’s exactly what happened to the NOAA database as seen in Figure 4. Yet, NOAA never corrected this false signature.

None of these sources of error compare to the outright and deliberate data manipulation by James Hansen, head of NASA’s Goddard Institute for Space Studies. An astronomer by training, he controls NASA’s temperature database. Over time, Hansen has become more and more radical, recently calling coal trains “death trains,” and advocating that “chief executives of large fossil-fuel companies...be put on trial for high crimes against humanity and nature.” He has shown himself to have a clear agenda, and to be a master of data manipulation to obtain his desired outcome.

For instance, Hansen produced a chart of U.S. temperatures in 1999 (Figure 5, blue line) that clearly shows a major warming in

hottest on record made instant headlines in most mainstream newspapers and on news broadcasts. Skeptics immediately found an error that allowed 1934 to be slightly warmer than 1998, but the correction was buried by the media or not publicized at all. Hansen’s blatant manipulation of the NASA database clearly proves the adage that statistics don’t lie, but statisticians do.

### What About Record July 2012 Heat Wave?

As if to prove that adage, Hansen proclaimed in August 2012 that earth’s land areas are much more likely to experience extreme climate records now than they were in the middle of the 20th century. Incredibly, the research was published in the journal, *Proceedings of the National Academy of Sciences* (PNAS). Again the announcement was dutifully trumpeted by the mainstream press. But as many skeptical scientists pointed out, Hansen’s data were cherry-picked.

Hansen did not include the Southern Hemisphere in his analysis, where much slower development has reduced the urban heat island effect and therefore the warming/extreme temperatures found in the corrupted data in the Northern Hemisphere. He also chose the period 1955-1999, which excluded the very hot, drought-plagued dust-bowl years in the 1930s. He also excluded the early 2000s and its lack of warming and extremes.

Additionally, a thorough and detailed analysis of NOAA data (not NASA) showed there has been *no* increase in extreme climate events from 1895 to 2009. If anything, there has been a small decrease in extreme events from the high in the 1930s. Hansen’s analysis is so blatantly contrived that it defies reason as to how it was ever published by the National Academy of Sciences—except to perpetuate the global-warming hoax.

Then there were the wild claims that the record melting of the Greenland ice sheet during summer 2012 was proof of man-caused global warming (Figure 8). One NASA article even implied that 97 percent of the Greenland ice sheet had melted. It was later corrected to 97 percent of the ice sheet’s *surface* that was melting—and then for just a few days! The temperature actually flirted with 0°C (32°F) for a few hours at the highest elevation recording station. In the end, it was all hype: “Ice cores from summit show that melting events of this type occur about once every 150 years on average. With the last one

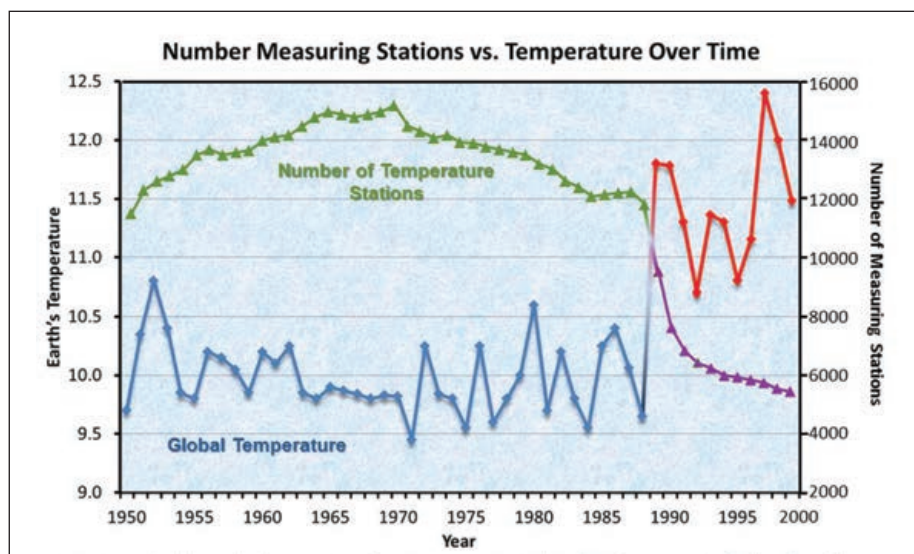


Figure 4. The number of temperature measuring stations (green) globally averaged 12,000 to 16,000 for 100 years. However, the collapse of the Soviet Union in 1991 and the cost-cutting measures of Canada and other nations during the 1990s resulted in the abandonment of nearly 7,000 stations (purple). Most were in northern latitudes and high elevations, resulting in a false signature of rapid warming (red). Source: Joseph D'Aleo and Anthony Watts, “Surface Temperature Records: Policy-Driven Deception?” *Science & Public Policy Institute*, Aug. 27, 2010. [http://scienceandpublicpolicy.org/images/stories/papers/originals/surface\\_temp.pdf](http://scienceandpublicpolicy.org/images/stories/papers/originals/surface_temp.pdf)

claims for man-caused warming continue to increase.

Another huge source of error was committed by NOAA in the late 1980s and early 1990s when the data from 7,000 stations suddenly stopped as these weather stations were abandoned in Siberia, Canada and other nations for cost-cutting reasons. Most of these stations were in colder latitude or high-elevation locations. When a colder subset of NOAA’s database is suddenly removed, the loss of the cold station data will automatically show enormous warming from previ-

the 1920-to-1950 period, peaking in 1934 at 1.4°C (2.5°F) above the long-term mean (dotted blue line). The 1934 high was about 0.6°C (1.1°F) higher than the 1998 maximum (purple comparison). In 2011, Hansen manipulated the data some more so that 1998 (red dotted line) was now a whopping degree higher (purple) than the same data in his 1999 analysis. In comparison, the algorithms he used only raised the 1934 temperature by 0.3°C (0.54°F), conveniently making 1998 the hottest year on record.

Hansen’s proclamation that 1998 was the

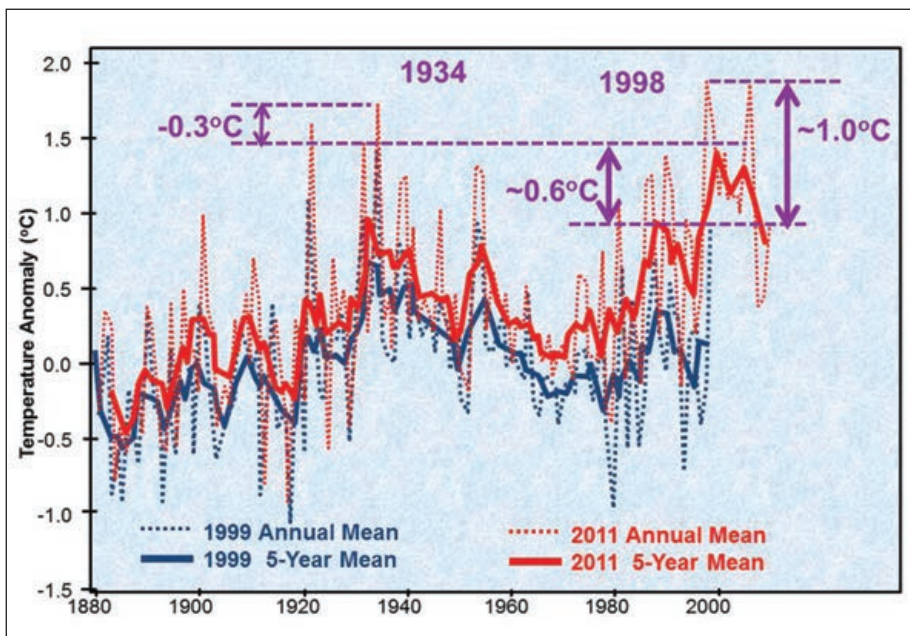


Figure 5. NASA published temperature data for 1880 through 1998 in 1999. Annual means are blue dotted lines, the five-year running mean is solid blue. The same data were again published in 2011 (dotted and solid red lines), except the data had been “adjusted.” Although all temperatures showed an increase, the latter years showed the greatest increase. Whereas the 1999 analysis showed 1934 as the hottest year ever recorded, the 2011 adjusted data showed that 1998 was the hottest. This data manipulation allowed NASA to proclaim that 1998 was the hottest year on record. Source: Joseph D’Aleo and Anthony Watts, “Surface Temperature Records: Policy-Driven Deception?” *Science & Public Policy Institute*, Aug. 27, 2010. [http://scienceandpublicpolicy.org/images/stories/papers/originals/surface\\_temp.pdf](http://scienceandpublicpolicy.org/images/stories/papers/originals/surface_temp.pdf)

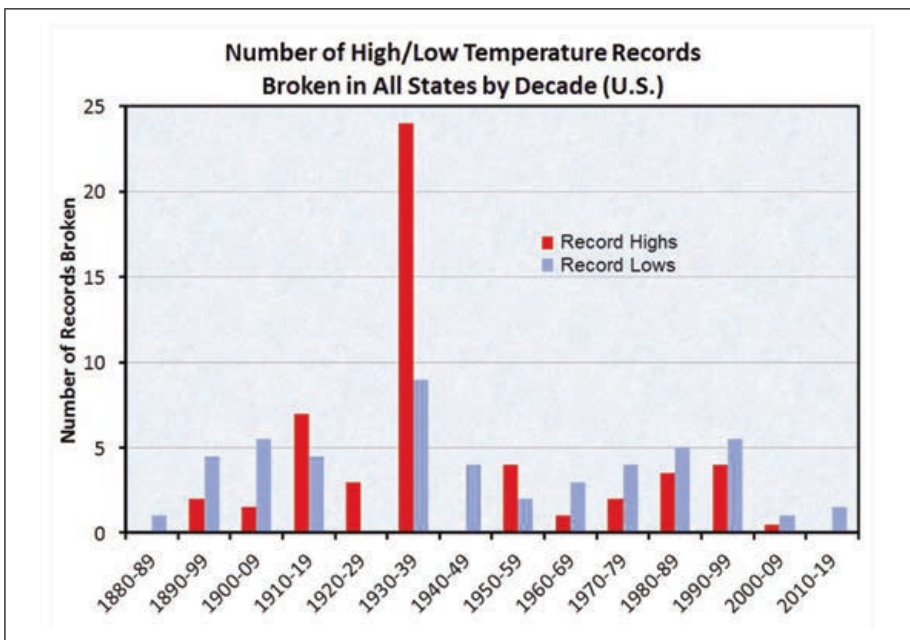


Figure 6. Number of high and low records broken for states over time. The 1930s, during the dust-bowl period, had orders of magnitude and more broken records than any time since. Source: Dr. Madhav Khandekar, “Climate Catastrophe or Media Hype?” *PJ Media, Daily Digest*. Aug. 7, 2012. <http://pjmedia.com/blog/climate-catastrophe-or-media-hype/?singlepage=true>

happening in 1889, this event is right on time,” says Lora Koenig, a [NASA] Goddard glaciologist and a member of the research team analyzing the satellite data.

As usual, the “record melting” made

headline news even though it was actually a nonevent that was predicted in advance. It had nothing to do with man-caused warming, yet the public is reinforced with the absolutely false idea that we are experiencing

unprecedented warming all around the world—even threatening Greenland’s ice sheet. However, you have only to look back to 1942 when World War II planes were forced to land on Greenland’s southern ice sheet. When those planes were finally found in 1992, they were 268 feet below the ice’s surface—locked in ice that had accumulated since they had landed! Losing some of that ice might just be a good thing. (Figure 12)

Similarly, in August 2012, NOAA proudly declared that July 2012 was the hottest month in the United States on record. Don’t believe it. NOAA’s declaration was based on its incredibly corrupt database described above. Ironically, NOAA had decided (or was forced?) about 10 years ago to develop a system of 114 rural stations called the U.S. Climate Reference Network (USCRN). These stations were set up using the strictest siting



Figure 7. Stratford, Texas, 1935. The hottest temperatures in recorded history occurred during the infamous dust-bowl days of the 1930s, not in the last 10 to 15 years, and certainly not in 2012. Source: George E. Marsh Album [http://www.weru.ksu.edu/new\\_weru/multimedia/dustbowl/dustbowlpics.html](http://www.weru.ksu.edu/new_weru/multimedia/dustbowl/dustbowlpics.html)

and data collection standards possible.

The USCRN’s website states that it was established for the “express purpose of detecting the national signal of climate change...using a high-quality climate observation network.” It is already showing a huge difference between NOAA’s corrupt database and the new USCRN database. NOAA’s corrupt temperature network showed July 2012’s temperature averaged 25.33°C (77.6°F), higher than the previous record set in 1936 of 25.22°C (77.4°F). However, using the 114 accurate stations in USCRN, July was actually only 24.27°C (75.5°F), nearly 2°F cooler than the 1934 record. While summer’s heat wave and drought were devastating in the United States, it was nowhere near as bad as in 1934.

The so-called record Arctic ice-cap melt of the 2012 summer tends to follow the same misdirection as the wild claim that July 2012



was the hottest month in the United States. On Aug. 27, 2012, the National Snow & Ice Data Center (NSIDC) announced the Arctic sea ice extent had broken the 2007 record low. But is it the best data? The data NSIDC

used to make that statement is from an old and unreliable satellite. It showed the ice cap had shrunk to 4.1-million square kilometers—a new 30-year record since satellites first started measuring the ice cap.

Just like NOAA had a newer, more accurate temperature data set that showed no record temperatures for July, NSIDC has newer, more accurate “multi-sensor” technology that shows the ice extent to be 4.7-million square kilometers—which is not a record. NSIDC conveniently omitted this caveat in its news release. Nor did it mention that a huge storm which it dubbed “The Great Arctic Cyclone of 2012” ripped apart the Arctic ice cap (see Figure 9), allowing it to disintegrate, not melt. This also happened in 2007. Finally, yet another product, NOAA’s National Ice Center Interactive

Multi-sensor Snow and Ice Mapping System, also shows no record.

Global warming certainly did not melt the Arctic ice cap. However, if climate change has altered circulation patterns that increase the frequency of these storms, then its mechanism and consequences (if any) should be studied further. In the meantime, the wild claims being made are typical alarmist hyperbole.

### What It All Means

This article contains just a few examples from the overwhelming body of scientific evidence that man cannot be causing global warming. The fraud and abuse is staggering. The databases used to date to “prove” global warming are hopelessly corrupt. Key scientists at NOAA, NASA and the CRU must have known this. Man-caused global warming has become a religion in which no amount of hard evidence will ever dissuade its followers. Every independent study in the past several years has shown the publicly proclaimed warming is double the actual warming. Except perhaps for a small amount, the warming that has occurred is not occurring because of CO<sub>2</sub>, but is a natural temperature rebound from the much colder Little Ice Age that ended about 1830. It is almost never reported. (Figure 10)

It is no surprise that alarmist scientists are becoming increasingly shrill about their false allegations that man is causing global warming which will destroy the earth—and us along with it. Egos and entire careers are at stake, as are billions of dollars of predetermined research grant money each year. If the research does not show man-caused warming, the scientist does not get funded again. Likewise progressive bureaucrats and politicians are prone to a very dangerous “sky-is-falling” mentality (see the author’s “Plundered”), and are allowed to get away with it because of a very progressive media that perpetuates the fraud.

In spite of the overwhelming research evidence that man-caused global warming is a hoax, very real but destructive alternative energy policies are being implemented in America. It’s not too late. We can learn from Europe. Its leaders are finding out how economically destructive these policies are and how little energy they produce. England, Spain and Italy are slashing wind- and solar-farm subsidies. Germany is building 23 new coal-fired generators while reducing renewable energy subsidies, even though many in

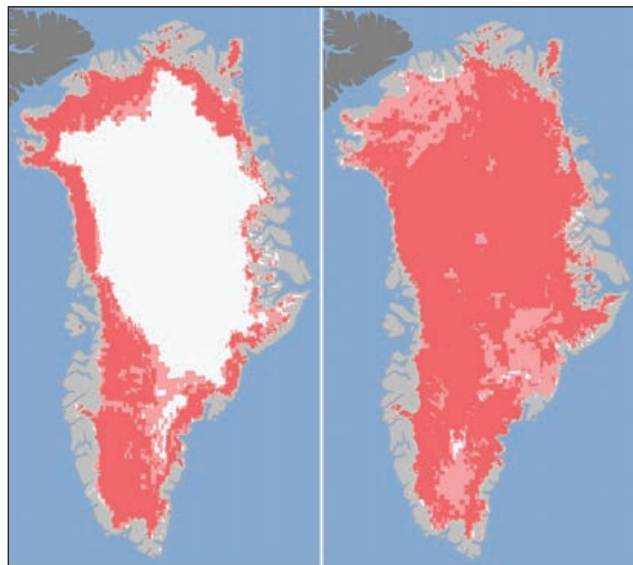


Figure 8. The extent of ice melting on Greenland on July 8 compared to July 12, 2012, was measured by satellites. This happened several times through mid-August 2012. Records show that this kind of melting has occurred every 150 years, with the last melting event in 1889. Additionally, even as the Arctic set a record low, the Antarctic set a record high sea ice extent in 2012. That would not happen if global warming was a factor. SOURCE: NASA <http://www.nasa.gov/topics/earth/features/greenland-melt.html>.

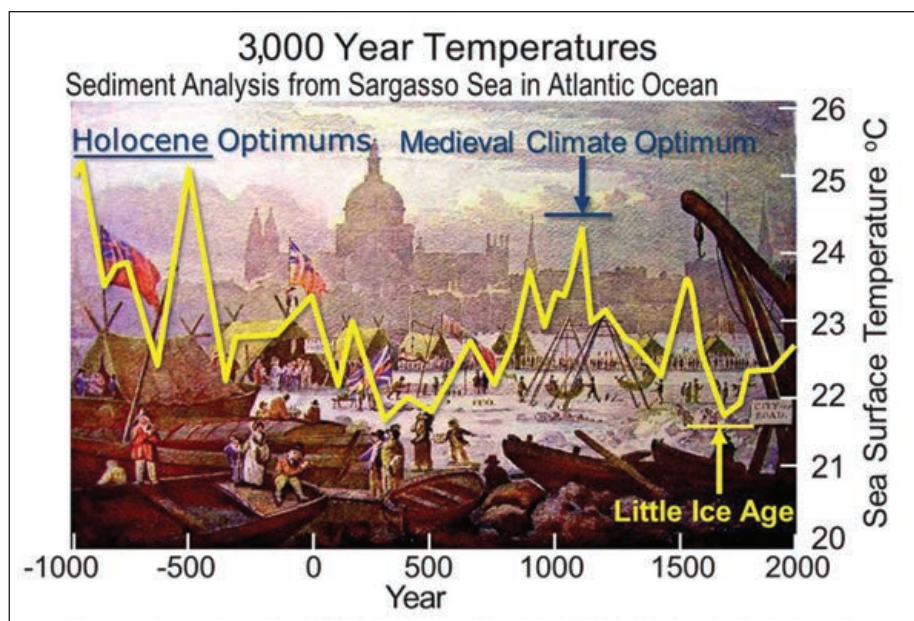


Figure 10. Over 100 research studies like the one above have found strong evidence all over the world for a Little Ice Age between 1600 and 1830 when it was about 1-1.5°C colder than today. London held numerous ice fairs on the Thames River during that period. The painting is of the last Frost Fair in 1814 (artist unknown). There is also strong evidence for the Medieval Climate Optimum when it was almost 2°C warmer than today and the Holocene Optimums which were almost 3°C warmer than today. The Little Ice Age was accompanied by widespread starvation as crops failed. The meager warming since that time is natural, not man-caused. Alarmist scientists have done everything in their power to get rid of the Medieval Climate Optimum and Little Ice Age because in the temperature record they expose their lie that the 20th century warming was unprecedented. (See “Lies and Damned Lies,” RANGE, Spring 2010, at [www.rangemagazine.com](http://www.rangemagazine.com)). SOURCE: L.D. Keigwin (1996), *Science* 274, 1504-1508.

that country still cling to an impossible goal of producing 35 percent of its electricity from renewable energy by 2020. It's a schizophrenic policy that refuses to deal with reality. The United States must learn from Europe's devastating mistakes. Instead, it is implementing policy that mirrors Europe's destructive policies.

As described in "The Economy-Wrecking EPA" in Spring 2012 (rangemagazine.com), the EPA is imposing what is called the Boiler MACT Rule (mercury and air toxics standards) to allegedly reduce CO<sub>2</sub> emissions. Since then, the highly respected and nonpartisan American Legislative Exchange Council (ALEC) published a detailed 91-page analysis which found that Boiler MACT will shut down 753 coal-fired electricity-generating plants, with a concurrent loss of 827,000 jobs. It will also kill up to 272 gigawatts of electricity of the total 1,137.3 produced in 2010 at a cost of \$33.4 billion per year. An additional 7.3 million jobs will be threatened by 2020. All this without *any* demonstrated benefits in health.

## Michael Mann Threatens Lawsuit

You might remember the infamous hockey-stick temperature record (Figure 11) prominently featured in the 2001 United Nations Intergovernmental Panel on Climate Change report. (See "Lies and Damned Lies," *RANGE*, Spring 2010.) Created by Penn State's Dr. Michael Mann, it was thoroughly discredited. The original data that showed a decline of temperatures in the last part of the 20th century was replaced with what we now know as "adjusted" data that falsely showed a dramatic increase (see main article).

That's not all. Rigorous testing of the raw data showed that the wrong statistics were used to analyze the data. In fact, the analysis used by Mann would show the same hockey-stick curve no matter what data were used. When the data were corrected, out popped the Medieval Optimum and Little Ice Age depicted in Figure 10.

Mann and most global-warming alarmists continue to refuse to accept the heavy criticism and ridicule resulting from the exposure of Mann's hockey-stick data manipulations. They claim Mann was exonerated by the National Academy of Sciences.

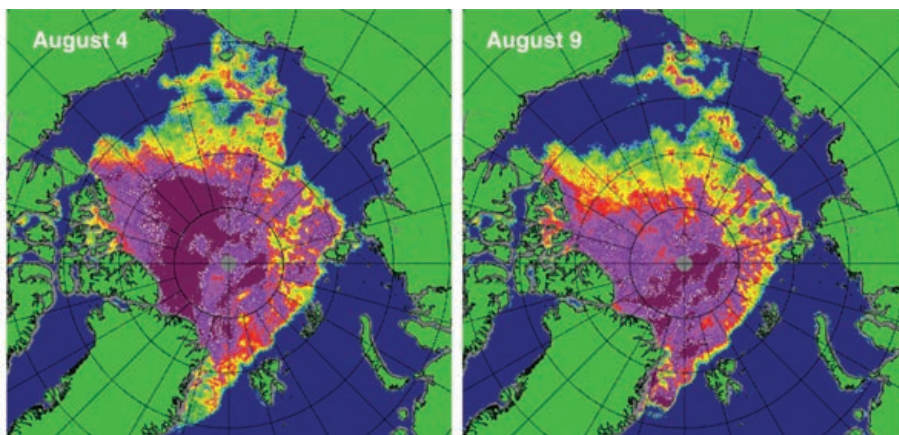


Figure 9. The headline news proclaiming that the Arctic ice cap extent hit a record 30-year low was based on a decaying and unreliable satellite. More importantly, an unusually violent Arctic storm occurred between Aug. 4 and 9, 2012, which ripped much of the ice cap apart, accounting for almost all of the alleged "melt" from global warming.

For consumers, ALEC determined Boiler MACT will increase gasoline (the regulations also impact refineries) and home electricity costs by 50 percent, 75 percent for industrial electricity and residential natural gas prices, and 600 percent for electric utility coal prices. The EPA's only justification for these econo-

my- and job-destroying regulations is that it will reduce CO<sub>2</sub> emissions that these progressive scientists, bureaucrats and politicians falsely claim is causing global warming. ALEC concludes, "These costs come with little to no environmental benefit."

That's not all. *The Wall Street Journal*

The NAS did no such thing and, in fact, it validated the Congressional and peer-reviewed analysis that originally discredited Mann's hockey stick.

Although Mann had endured numerous accusations of deliberate intellectual fraud, he suffered the last straw when Mark Steyn wrote in a July 15, 2012, quip in *National Review Online*, "Michael Mann was the man behind the fraudulent climate-change 'hockey-stick' graph." Citing yet another article, Steyn went on to write, "Graham Spanier, the Penn State president forced to resign over his [cover-up] of Sandusky, was the same [person] who investigated Mann, the very ring-master of the three-ring circus." Sandusky was found guilty of raping young boys, some of whom Spanier was aware of, yet took no action against Sandusky. Steyn

concluded, "If an institution is prepared to cover up systemic statutory rape of minors, what won't it cover up?"

Mann apparently went ballistic. Even though far worse things had been written about him, including the link to Penn State's sex scandal, Mann's ego could stand no more. In what can only be described as an act of unsubstantiated hubris, he is suing *National Review Online* in general, and Mark Steyn in particular.

Dr. Mann should seriously reconsider his lawsuit. Such a suit opens all his records up to discovery—the same records that many other investigators, including Congress, have been trying to get for years, and whose Freedom of Information requests have so far been rejected.

So far, the accusation of fraud by Mann has been used in the context of intellectually bogus and wrong, not in a criminal sense. Many investigators believe Mann is hiding evidence of criminal fraud in his records. Is Mann's ego so large that he is willing to take this risk? He doesn't have a legal leg to stand on.—MC

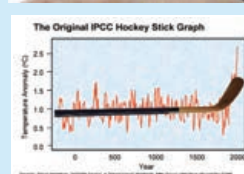
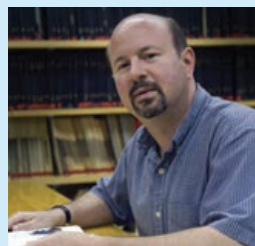


Figure 11. Michael Mann and his famous hockey-stick curve that shows flat temps for almost 2,000 years, then a sudden increase during the last half of the 20th century. It completely eliminates the Medieval Optimum and Little Ice Age (Figure 10). After the IPCC featured it in its 2001 report, the graph was proven to be nothing more than a selective elimination of data, and the application of very inappropriate statistics.

SOURCE: STEVE MCINTYRE, 9/27/08





© LOUIS A SAPIENZA, ALL RIGHTS RESERVED

*Figure 12. This is “Glacier Girl,” a P-38 that made a forced landing on the Greenland ice sheet in 1942. It and other planes with it were found in 1992 after about 10 years of searching. The reason they couldn’t be found was because 268 feet of ice had accumulated over them in the 50-year period. The B-17s were crushed, but the P-38s remained relatively intact, as seen in this melted cavern. Believe it or not, the guns still worked! Glacier Girl was disassembled, hoisted up, and reassembled in the U.S. It now flies in air shows. We don’t need to worry about the Greenland ice sheet melting any time soon!*

reports that the EPA’s new ozone requirement (another greenhouse gas) by itself will add over \$90 billion in compliance costs to manufacturers. Worse, 85 percent of all U.S. counties will be in violation of the new standards, costing hundreds of billions more as they try to comply “in vain attempts to meet unachievable standards.” That’s not including the tens of billions more that will result from the full implementation of the Dodd-Frank Financial Reform Act. That, however, is another story. The EPA predicts huge benefits from these draconian regulations, but independent analyses show only a few cents of benefits for every dollar of cost.

As my book “Plundered” details, it is not just the Obama administration and its bureaucrats who are living in delusion; it is Congress, many of our federal and state judges, most state legislators, anyone who calls themselves a progressive. Psychiatric studies dating back over a hundred years show they cannot connect to reality.

It is imperative that one of the first things

the 113th Congress should do in 2013 is to withdraw the Boiler MACT and ozone regulations. Power must also be stripped from the abusive EPA. ALEC warns, “In the past couple of years, the...EPA has begun a war on the American standard of living, promulgating and finalizing the most onerous regulatory assault on the American economy since its inception more than 40 years ago.” That is also true of every federal and most state agencies as they mindlessly implement their green religion.

The abuse is so bad that many leaders called for the abolition of the EPA. Their concern is justified. Very little has been done by the EPA the past two decades that was truly based on sound science. Finally, Congress must stop federal agencies from funding billions of dollars in climate-change research. If America does not begin to reverse the laws and regulations that are crippling our economy, we will destroy the free market engine that has made this nation the greatest in the history of the world. ■

*Dr. Coffman is president of Environmental Perspectives Incorporated (epi-us.com) and CEO of Sovereignty International (sovereignty.net) in Bangor, Maine. He has had more than 30 years of university teaching, research and consulting experience in forestry and environmental sciences and now geopolitics. He has led a multimillion-dollar research effort on climate change and was one of four who stopped the ratification of the Convention on Biological Diversity one hour before the Senate cloture vote. The Biodiversity Treaty is one of the major treaties promoted by Agenda 21. He produced the acclaimed DVD, “Global Warming or Global Governance” (warmingdvd.com), disproving man-caused global warming—another major theme of Agenda 21. Dr. Coffman’s newest book, “Plundered: How Progressive Ideology Is Destroying America” (AmericaPlundered.com), details how the American people are being indoctrinated and bullied into a very destructive belief system called progressivism. His recent book, “Rescuing a Broken America” (rescuingamerica-book.com), is receiving wide acclaim. He can be reached at 207-945-9878 or epinc@roadrunner.com.*